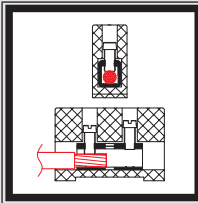


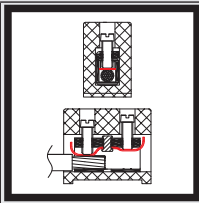
Blocs de jonction stéatite gamme 450V



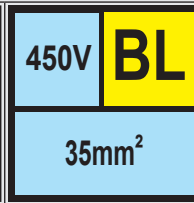
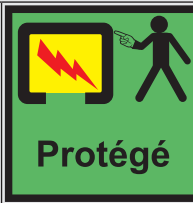
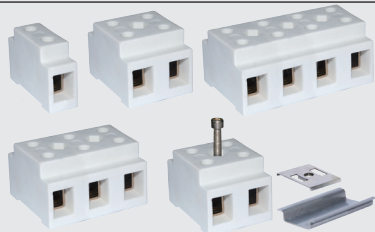
Protégés contre les contacts accidentels, bornes laiton **découpées**, vis acier nickelé.



Sans plaque de pression



Avec plaque de pression



35 mm², serrage direct Montage possible sur rail Din 35mm

BL351	97 gr.	CABLE RIGIDE 35mm ² / 25mm ² / 16mm ² / 10mm ² AWG2 / AWG4 / AWG6 / AWG8	BL352	219 gr.
		CABLE MULTIBRINS 25mm ² / 16mm ² / 10mm ² AWG4 / AWG6 / AWG8		
BL353	341 gr.		BL354	463 gr.
	2.5 N.m 450V Permanent 230°C / 450°F Pointe 450°C / 840°F	M6 125A		

35mm², serrage indirect avec plaque de pression Montage possible sur rail Din 35mm

BL351P	100 gr.	CABLE RIGIDE 35mm ² / 25mm ² / 16mm ² / 10mm ² AWG2 / AWG4 / AWG6 / AWG8	BL352P	225 gr.
		CABLE MULTIBRINS 25mm ² / 16mm ² / 10mm ² AWG4 / AWG6 / AWG8		
BL353P	350 gr.		BL354P	475 gr.
	2.5 N.m 450V Permanent 230°C / 450°F Pointe 450°C / 840°F	M6 125A		



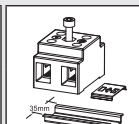
Page (.pdf)



Plan 2D (.dwg)



Plan 3D (.stp)



Clip de montage sur rail Din 35mm

Référence

66AT410650